

# NEXT-GEN PORTALS

## THE DIGITAL WORKPLACE FOUNDATION

Portals are a first and essential step in any digital workplace journey. Simply put, they are a central place for employees, customers, partners, and vendors to obtain essential information. Information may come from different sources, and be created or managed by different groups of people. Next-gen portals provide a user-centric approach, allowing people to access information from anywhere on any device.

*Organizations often need different types of portals each serving a different purpose and audience.*

## OUR SOLUTION

Sierra Systems has years of collective experience and expertise with building user-centric portals on-premise or in the cloud. Our teams have developed these portals using a variety of technology platforms including: Microsoft SharePoint, Portals for Dynamics 365 (Dynamics CRM), the Microsoft BI suite and .NET, Java, JavaScript, and web frameworks for custom user experiences and integration with other systems.

Sierra Systems has developed solution accelerators to take out-of-the-box portal experiences to the next level. Placed on top of your existing platform, these pre-defined configurations turn out-of-the-box portals into advanced user experiences. Leveraging Sierra Systems' cumulative knowledge, these pre-built templates can help achieve future upgrades that are minimally intrusive.

Finally, we leverage our custom development and user interface (UI) teams' expertise when a customized portal user experience is required, or when platform portals need integration with other enterprise applications. Our teams use industry-standard web frameworks, API gateways, and cross-application identity and authentication protocols.

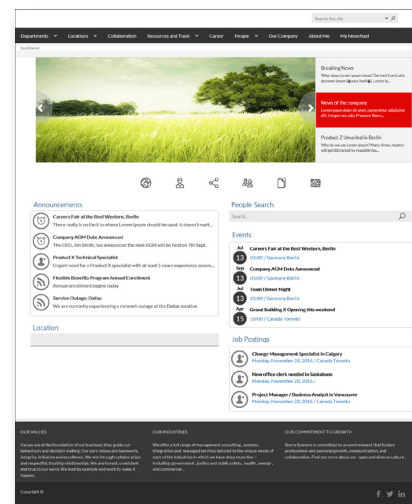
## INTRANETS

Intranets are internal communication and content portals built to increase employee engagement and collaboration. Common features of intranets include: corporate news and events postings, people directories, success stories and profiles, central access to resources and tools, and departmental or business unit sites with published content for the organization. In addition, team collaboration sites can be used for efficient day-to-day document management.



### SISA — SharePoint Accelerator

- Mobile-ready intranet with a responsive design.
- Pre-built capabilities, templates, and Web Parts.
- On-premise, SharePoint, Office 365, cloud, and SharePoint Online.



## SELF-SERVICE PORTALS

Every organization interacts with customers, partners, or external stakeholders with member or citizen portals. These portals allow you to provide customer service and increase customer engagement via self-service help desks, streamlined case management, and a fully-populated knowledge base. Self-service portals help with partner channel management and opportunity delegation, accounts, and customer management. Citizen portals enhance service delivery from government institutions.

### Dynamics 365 Portals

- Case management, help desk, and partner relationship management configurable apps.
- Self-registration and profile management for secure access.
- Modern web and mobile experience.

## CUSTOM PORTALS

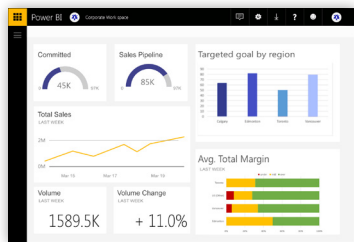
As an alternative, Sierra Systems can build custom portals, designed to fit the exact requirements of the organization. Breaking free from the structure of COTS products, the level of complexity can be as advanced, or simple, as needed.

### Custom Portal Benefits

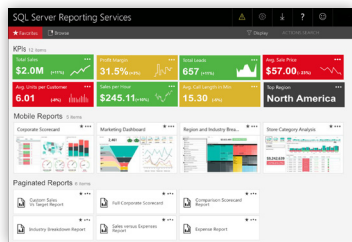
- Highly-customizable user experience and flow via the usage of Angular, Bootstrap, or React.
- Integration with enterprise applications (ERP, CRMs, HRIS, etc.) and third-party services (Payment processing, LMS).
- Can be developed to work with either on-premise or cloud PaaS.

## BI PORTALS

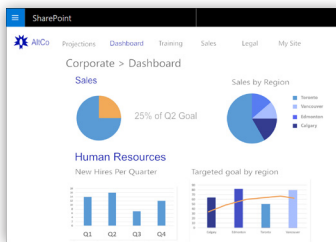
Reporting and dashboard portals visualize data sets, illustrating important metrics and relationships in one central place, by securely drawing from different systems, such as databases, enterprise applications, and Internet of Things (IoT) devices. These can take the form of dedicated business analytics portals or can be used to embed reports and dashboards into existing portals.



**Power BI**  
Simple, modern, interactive reports and dashboards.



**SSRS Web portal**  
Deeper control over your report designs.



**SharePoint BI portal**  
Advanced content management and branding.



**Power BI embedded services**  
Integrate the Power of BI into your existing portals.